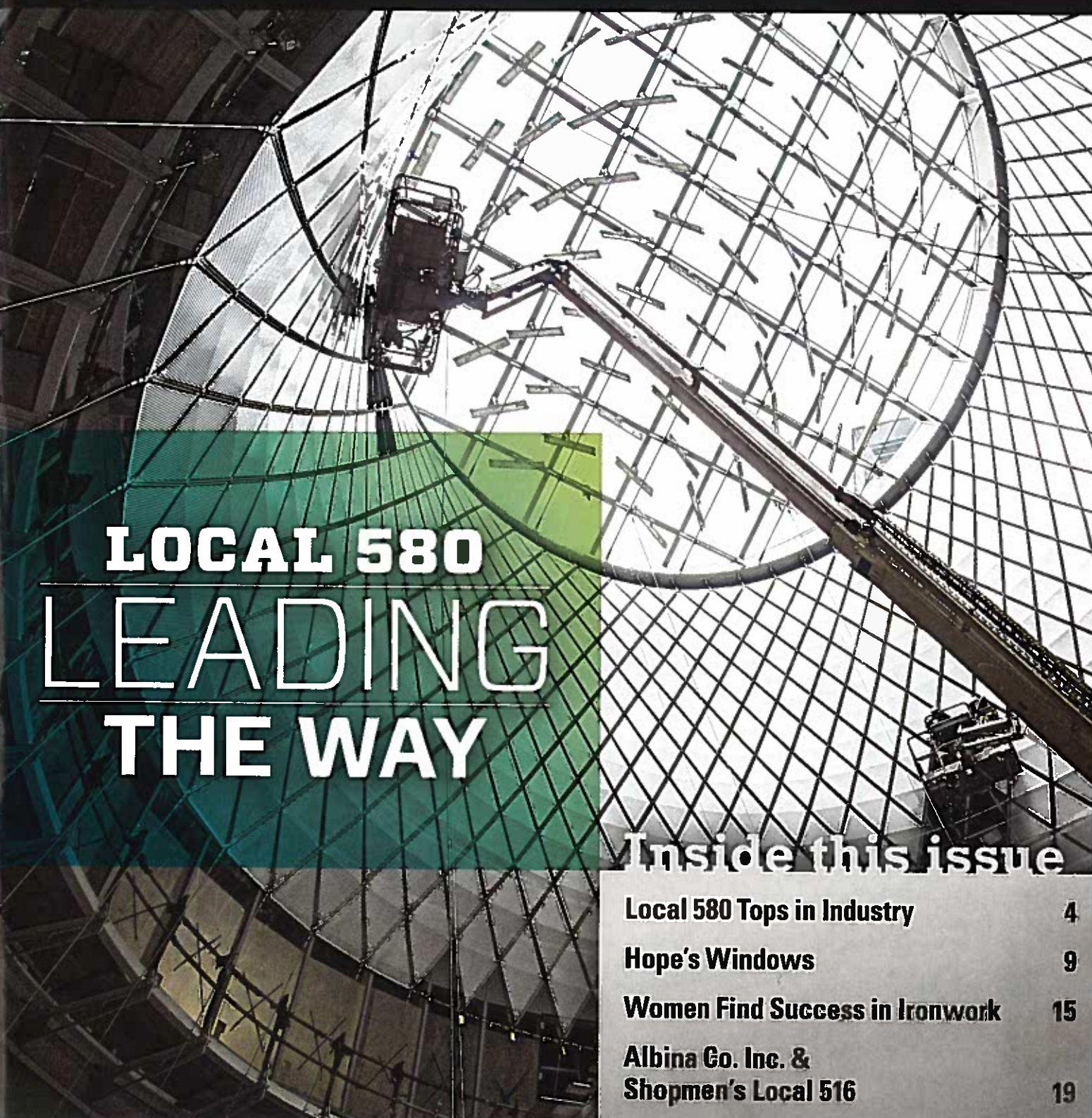


THE IRONWORKER


MAY 2015



LOCAL 580 LEADING THE WAY

Inside this issue

- | | |
|--|----|
| Local 580 Tops in Industry | 4 |
| Hope's Windows | 9 |
| Women Find Success in Ironwork | 15 |
| Albina Co. Inc. &
Shopmen's Local 516 | 19 |



LOCAL 580 LEADING THE WAY

THE IRONWORKER



The oculus skylight of
Fulton Center (see page 8).

LOCAL 580 (NEW YORK), WITH ITS 1,800 PLUS MEMBERS, is the largest local in the New York State District Council; last year, topping the three million hour mark mostly in the window, curtain wall and finish metals industry. When building owners and design teams want a signature project on the isle of Manhattan, they are sure to call on the skilled craftsman of Local 580. Local 580 is a direct descendent of Local 52 of the Housesmiths and can also be linked to the original Local 2.

The backbone of the great organization of Local 580 is the training facility, which employs 14 instructors, all Local 580 members who are dedicated to the apprenticeship program and journeymen upgrading classes. Every student who comes to the school is assigned their own locker to store books and other school related material. The school has four large classrooms, an oxyacetylene burning shop, two workshops and two welding shops used to accommodate the apprentice and journeymen upgrading programs. The oxyacetylene burning shop has 16 booths where students spend numerous hours learning to burn metal.

The state of the art welding shop has 31 welding booths where students learn many different welding processes such as SMAW, GTAW, FCAW and GMAW. In the second welding shop, all of the cutting, bending, and millwork is done with equipment such as band saws, wrap around benders and a lathe machine.

In the main workshop, there is a steel structure where students are trained to install stairs, curtain walls, window walls, store fronts, rig-

ging and use of an overhead crane. Students are trained to install revolving doors, swing doors, roll up doors, fence and guardrail, and layout and total station in their second workshop.

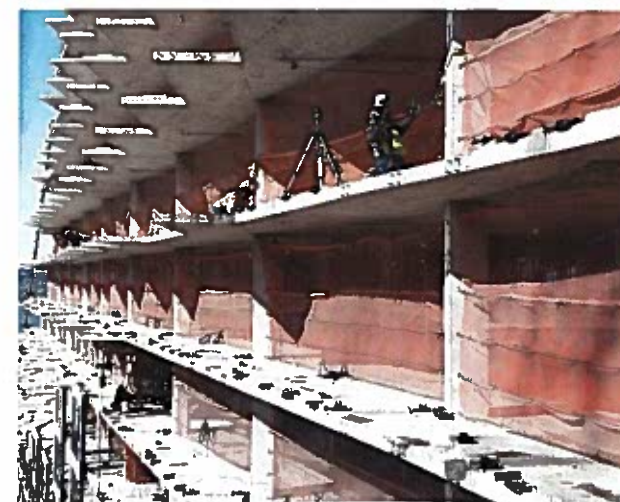
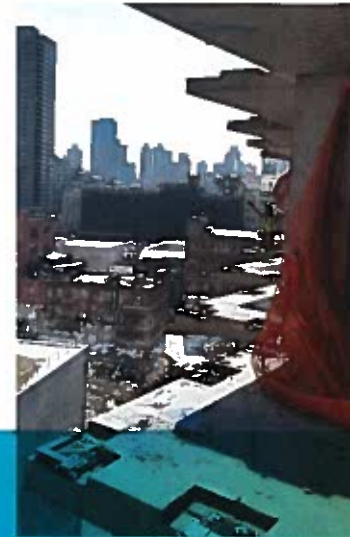
The standards for safety training have grown over the last decade and there is no substitute for a safe work place along with an experienced and highly trained journeyman. The Local 580 educational fund's goal is to ensure ornamental ironworkers are the most capable workers in today's construction industry.

Local 580 ornamental and architectural ironworkers are shaping the skyline of New York City in some interesting ways.

From downtown to uptown, architects are calling on Local 580 to install curtain wall and metal panels. The HUB is a remarkable cone shape covered dome seeming to come straight from the future. The new Coach Tower will be wedge shaped with the top leaning far over the base. The pyramid job on 57th street will be pyramid shaped with a continuous steel spline to support the exact placement of the curtain wall panels forming the triangular shape of the building.

THE COACH TOWER

(10 HUDSON YARDS): 1.7 million square feet, 895 feet tall, 7,741 curtain wall panels ranging in size from 5 foot by 5 foot by 13 foot long (1,200 pounds) to the pre-joined corner panels that are 5 foot by 5 foot by 27 feet long (6,100 pounds). There are also 19 floors of cable net wall and an atrium. The southern tower of the Hudson Yards Redevelopment project, the 52-story 10 Hudson Yards, is expected to open in 2015, anchored by Coach Inc. The building, for which ground was broken on December 4, 2012, was the first of the Hudson Yards buildings to begin construction, because it is not being built over railroad tracks. It will, however, straddle the High Line spur to Tenth Avenue. The tower is expected to receive LEED certification.



625 WEST 57th STREET

(W57): A Durst Fetner project nearly 600 feet tall, the residential and retail facility is being built as a green facility. The sloping shape was designed to preserve the view for a nearby building, also owned by the Durst organization. Rising on the corner of West Side Highway and 57th Street in Manhattan, the 750-unit West 57 will resemble a distorted pyramid with a steeply sloped facade, rising 467 feet toward the northeast. The triangular structure has been described as a hybrid between a European perimeter block and a traditional Manhattan high-rise. With its angular balconies around an integrated green plaza, the block will connect with the waterfront and the Hudson River Park, taking full account of the surroundings while providing fine views with little traffic noise.

LIVE, WORK, BE UNION!

NEW YORK'S LOCAL 580 IS ONE OF TWO ORNAMENTAL LOCALS within the North American marketplace with many signature projects ongoing and several projects are shovel ready. If you have visited New York, you know that they have a tight footprint to erect these magnificent buildings and towers. New York ironworkers have to be creative in their rigging and time frames to erect, as this city is on the go 24/7. General Organizer James Mahoney, Business Manager Peter Myers and the business agents do an incredible job working with their members to make it all come together! Local 580 members are skilled craftsmen and in the end, it's all about representing your local union. Ironworkers are a cut above the rest and it shows in our work. Thanks to all ironworkers for your hard work! —RAY DEAN, DOAMM





FULTON STREET HUB

(FULTON STREET AND BROADWAY): With more than a quarter million passengers commuting daily through six lower Manhattan subway stations, a cohesive flow was a luxury long gone without. However, the Architects' Fulton Center redesign streamlines access and transfers for the 12 subway lines and six stations populating the transportation hub at the southeast corner of Fulton Street and Broadway.

Local 580's scope for the transit center includes a nearly all-glass entranceway known as the pavilion wall. This three-sided structure ties into the adjacent Corbin Building, a historic 19th century structure. The pavilion stands four stories and 50 feet tall with 14,000 square feet of façade. An interstitial wall stands 9 stories and approximately 110 feet tall, and includes 2,500 square feet of façade. Local 580 also installed two underground levels of interior metal panels and doors.

The eye catching architectural piece of the new hub is an oculus skylight, whose dramatic cable net system utilizes perforated metal petals to bounce daylight through the atrium with complex, non-uniform geometries. For the transit center, Local 580 worked from a 3D model



of the interior cable net feature using nodal coordinate information provided by the structural engineer. Over 1,100 coordinates, each with an X, Y and Z component were used as the foundation to automate the generation of the cable net geometry and extract accurate cable lengths. This model served as a sturdy fabrication and installation means and methods, in addition to structural predicting the elongation of cable lengths when subject to loading.

Installations are of special importance given the site constraints of New York's dense urban environment. Strategies include preassembled trusses for the pavilion wall, a stick built fire rated steel glazing system for the oculus' cladding, and a preassembled cable net system with field installed perforated metal panels.